

PILLAR POINT HARBOR & VENICE BEACH Bacteria TMDL

Public Workshop and CEQA Scoping Meeting

Barbara Baginska

December 4, 2019



Part 1: Bacteria TMDL

- Problem
- Solution (TMDL Plan)
- Bacteria Standards and Data
- Pollution Sources
- Implementation Actions



Part 2: CEQA Scoping Meeting

- CEQA process for TMDLs
- Scope of Environmental Review
- Schedule/Input

Problem: Excess Bacteria

- Beaches in PPH and Venice Beach do not meet bacteria water quality standards
- Beneficial uses (BUs) are not protected → “Impairment”
- Relevant BUs: Recreational uses
 - Swimming/Wading
 - Kayaking
 - Fishing/clamming



Solution: TMDL – Total Maximum Daily Load

TMDLs are strategies to restore water quality

Identify
Probable
Sources

Determine Loading
Capacity/Max
Pollutant Limits

Identify Bacteria
Reductions Needed

Develop Plan
to Achieve WQ
Objectives

What TMDLs DO?

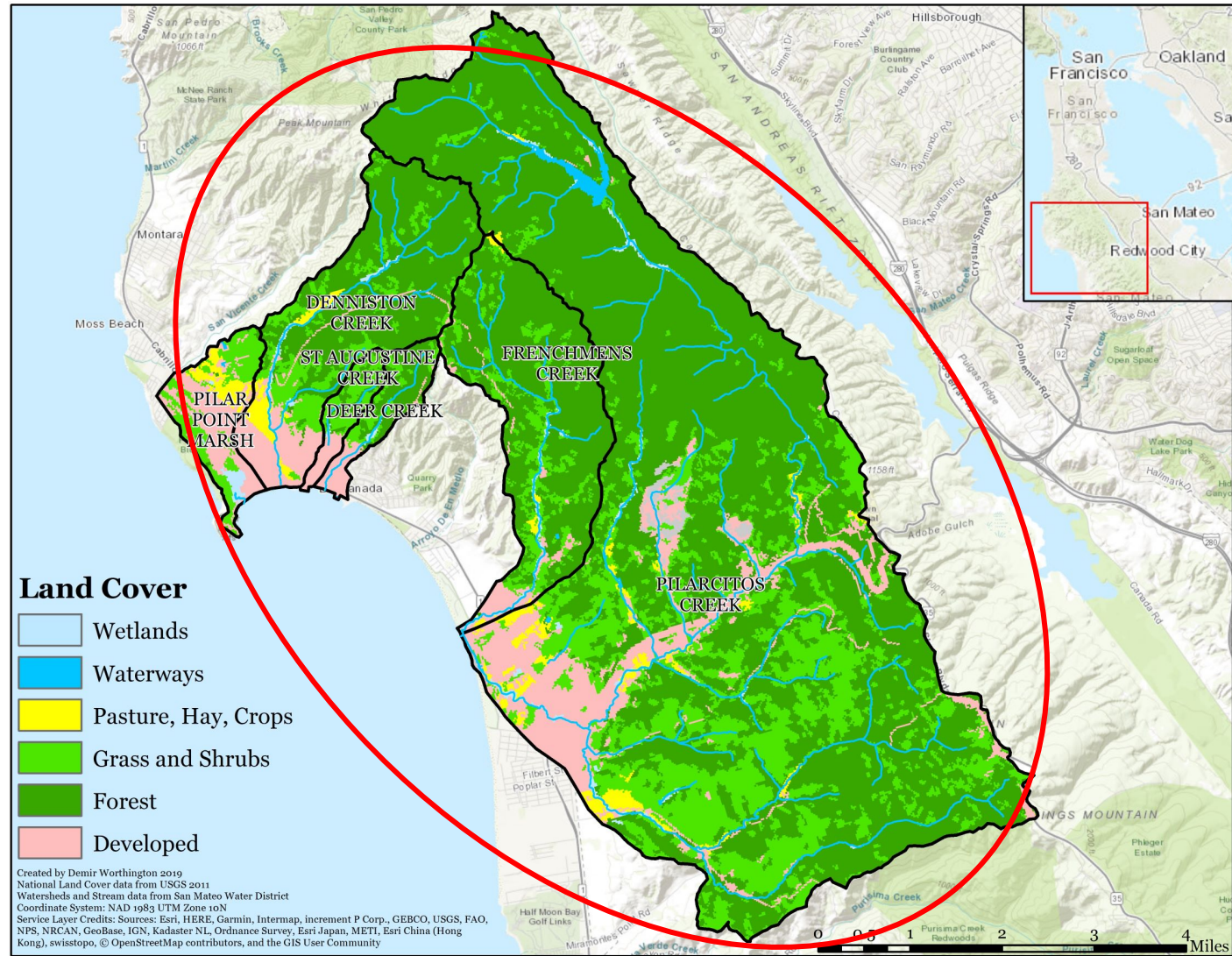
- Identify and prioritize sources of pollution/bacteria
- Develop plans describing actions needed to improve water quality
- Use existing permits and regulations (when possible) to require actions
- Outline monitoring needed to evaluate progress



What TMDLs DON'T do?

- Require immediate compliance with water quality objectives
- Imply enforcement actions are imminent
- Mandate specific management practices
- Presume all pollution is from human activities (natural sources too)

Project Area

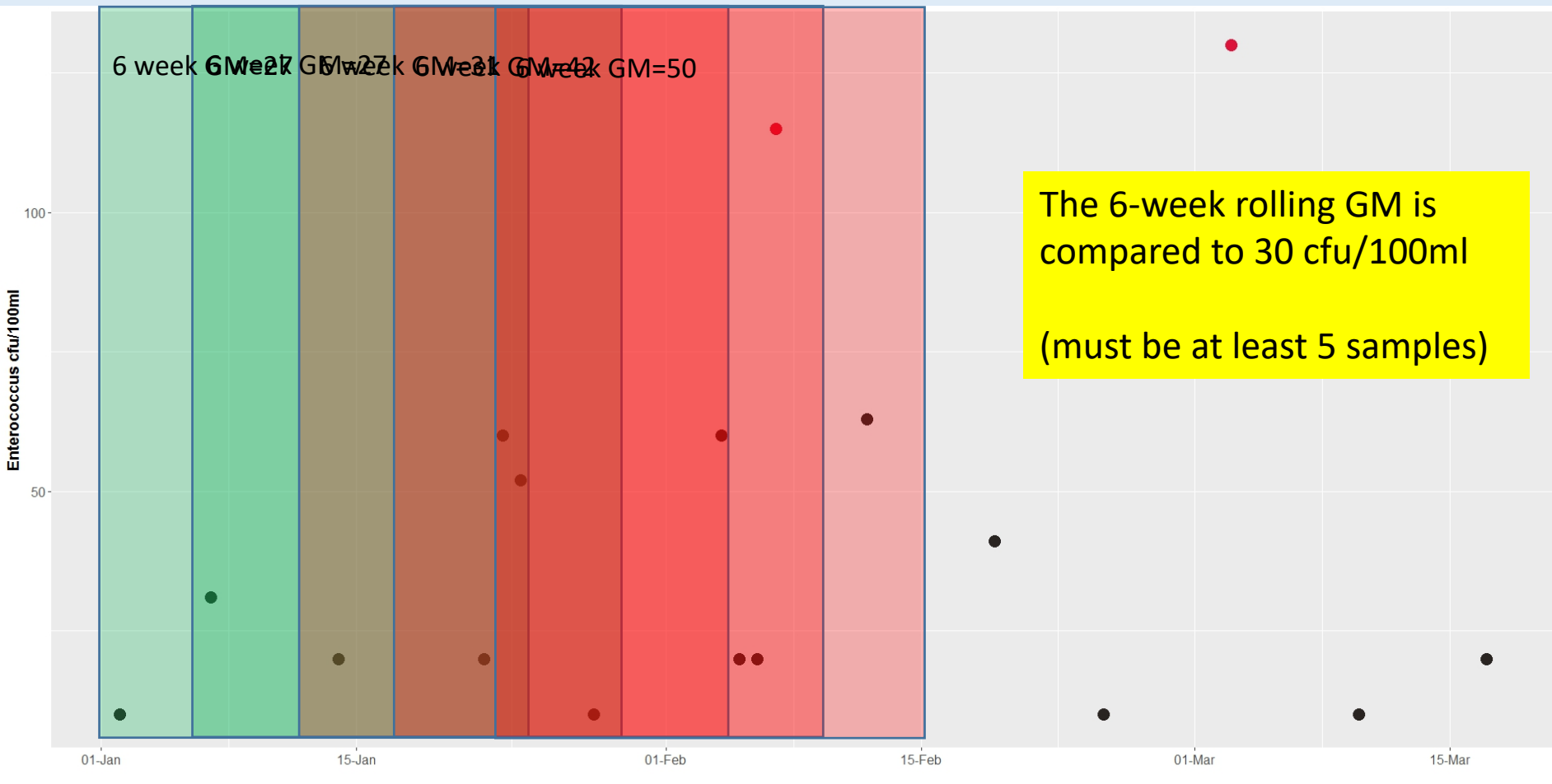


Water Quality Objectives

Indicator	Standard	
Enterococcus (estuarine/salt waters)	30 cfu/100mL (GM)	110 cfu/100mL (STV)
Fecal Coliform (Ocean Plan)	200 (30-day GM)	400 (SSM)

- **Geometric mean (GM)** : rolling GM for minimum five samples within a six-week period, calculated weekly $GM = \sqrt[n]{(a_1 a_2 a_3 \dots a_n)}$
- **Statistical threshold value (STV)**: for single sample values within a 30-day period (*Only used when geometric means could not be calculated*)
- **Single sample maximum (SSM)**
- **Impairment: exceedance** of the standards according to California Listing Policy

Computing 6-week Rolling GM



County of SM Beach Data

Description

Pillar Point 5 is located off Capistrano Road in the outer harbor, in El Granada. The water sample is collected near the storm drain outfall, on the west side of the inner-harbor breakwater.

Hyperlinks

[View in Google Maps](#)

[Visit SMC Health Site](#)

Details

SAMPLE_DATE
09/23/2019

SITE_NAME
PILLAR POINT 5

SITE_ID
AB41117

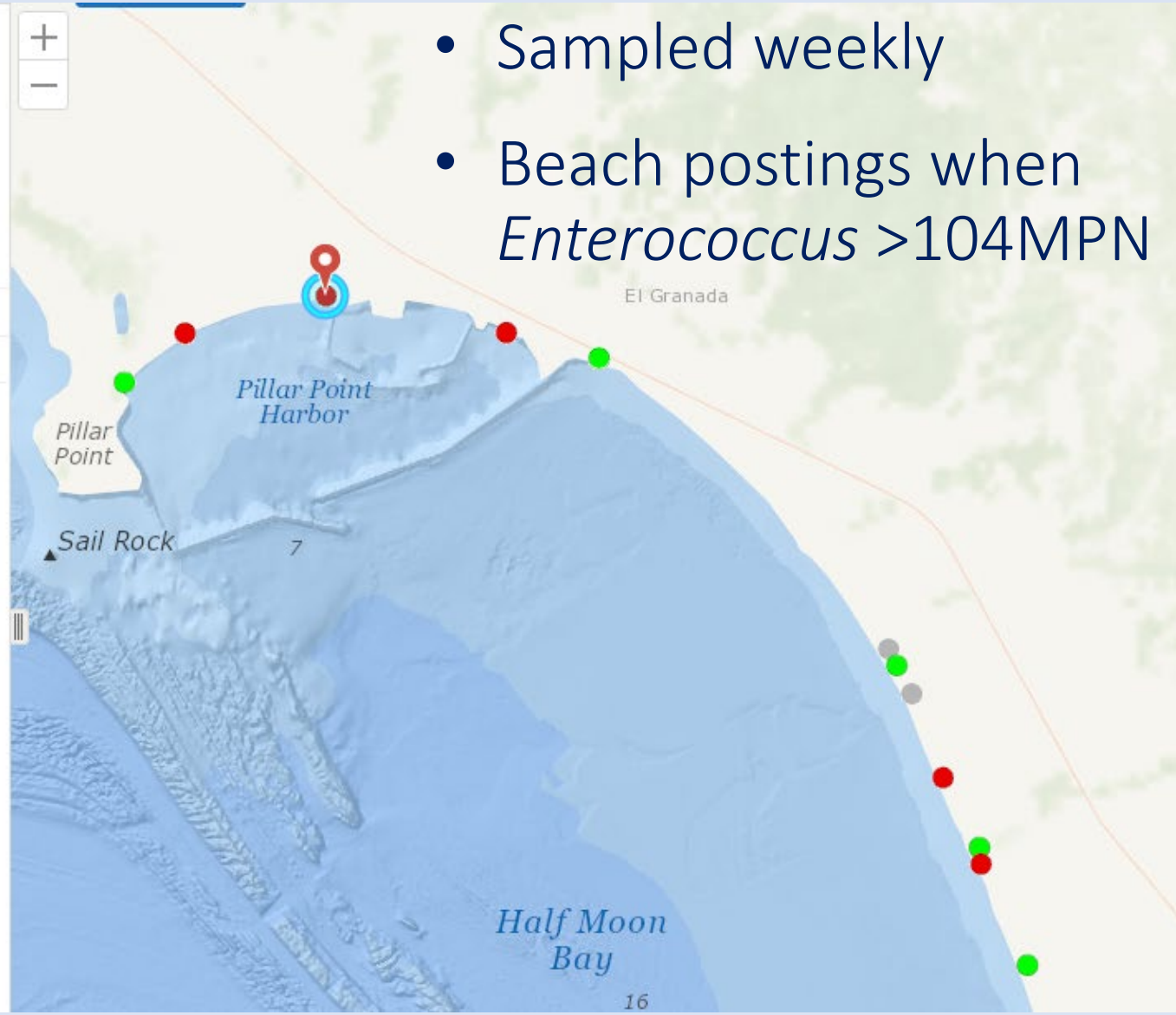
SITE_TYPE
BEACH

Enterococcus
960

Total Coliform
1850

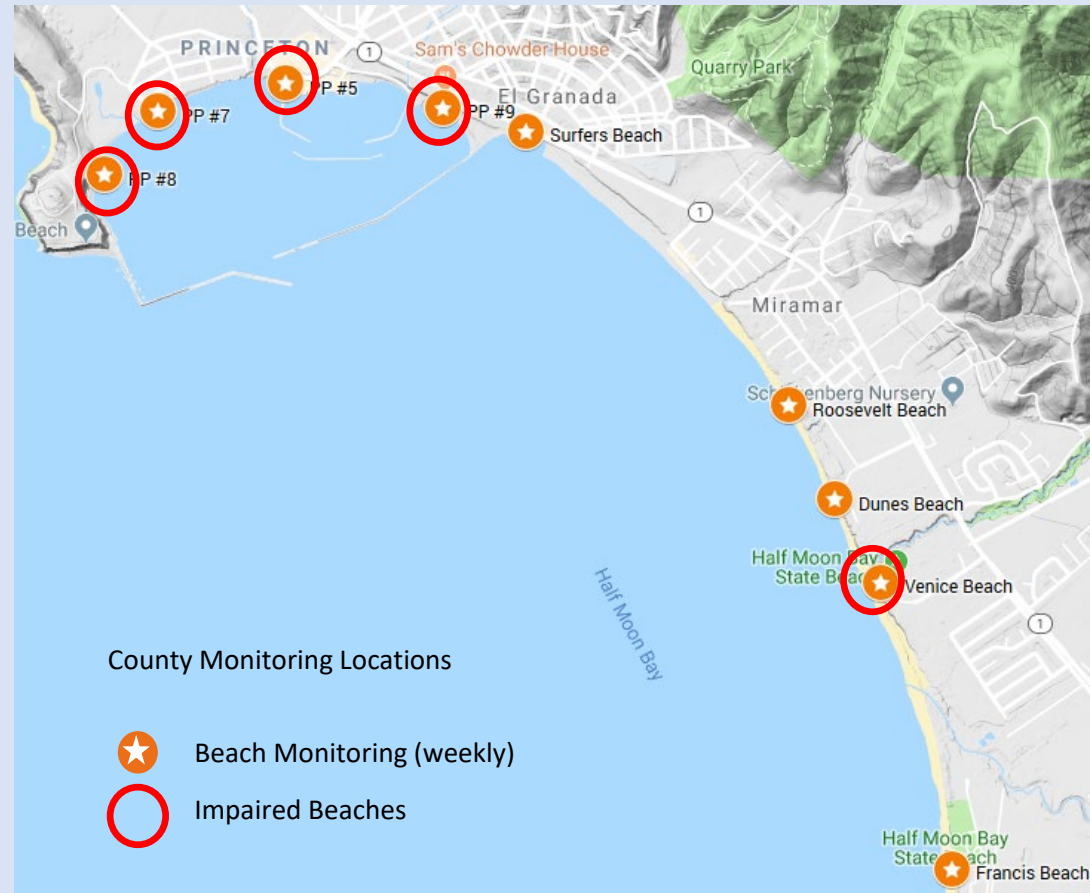
E.Coli
318

- Sampled weekly
- Beach postings when *Enterococcus* >104MPN

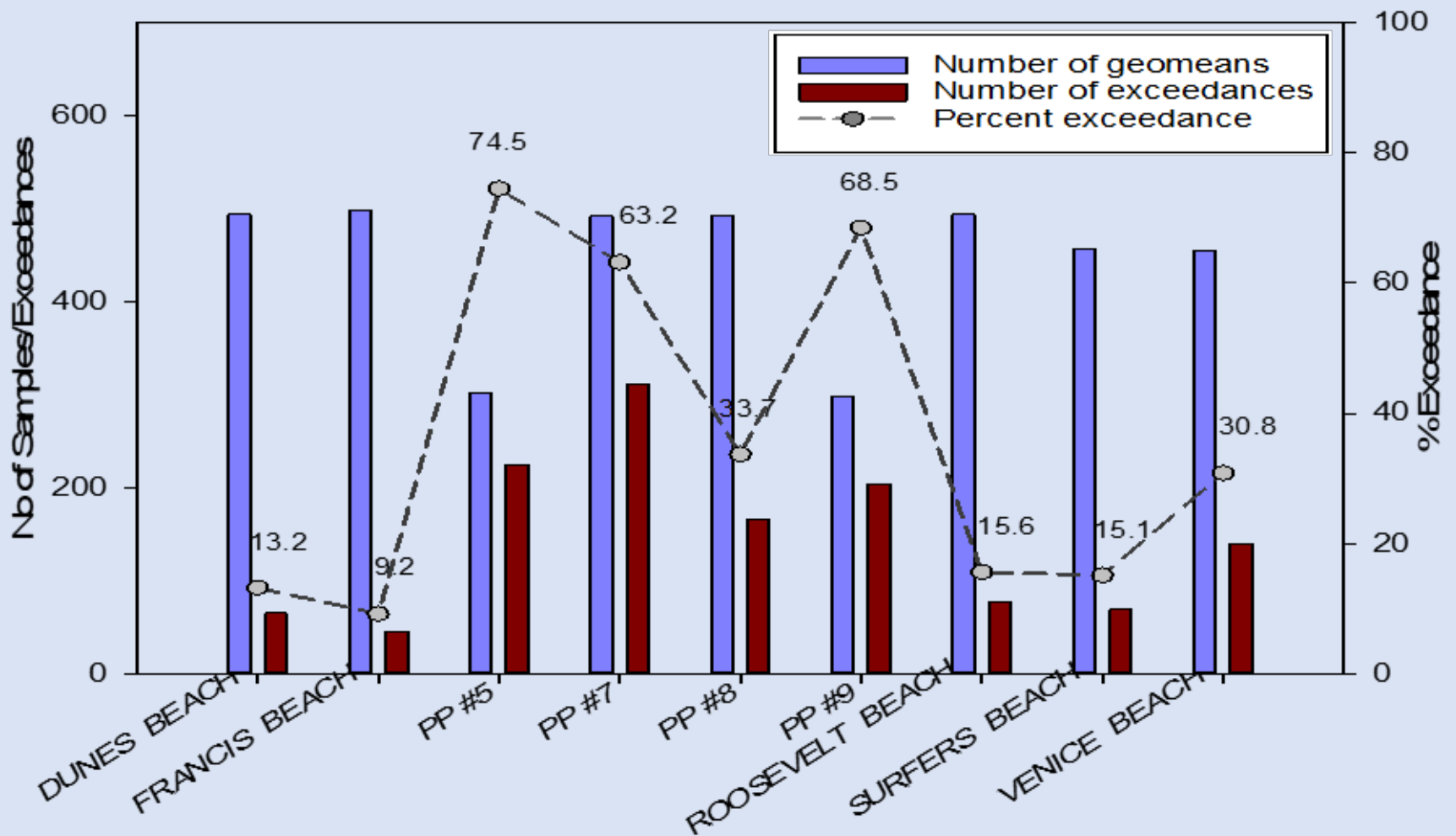


Water Quality Evaluation




- 9 beaches
- 10 years of weekly data (2007-18)
- Critically dry to wet years
- 450+ geomeans at each location



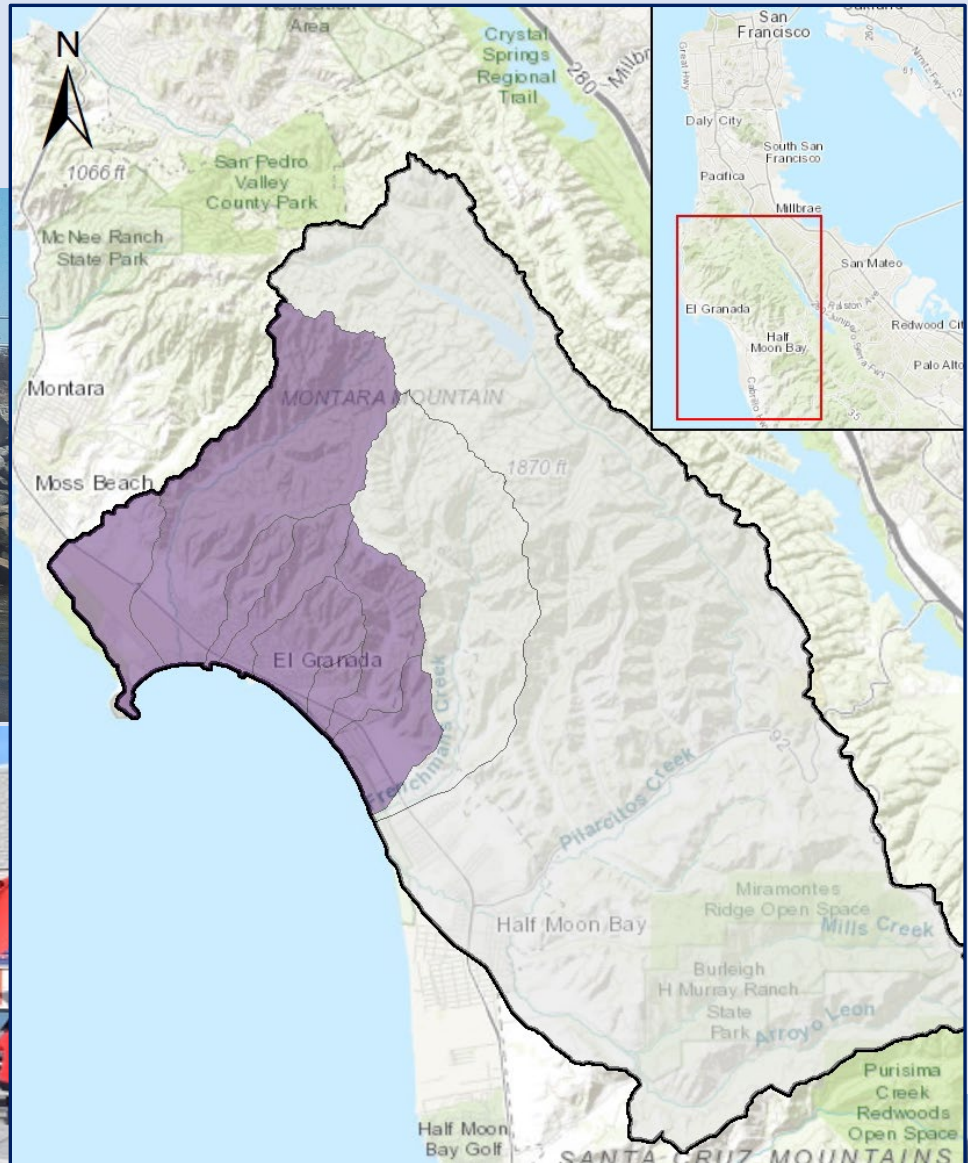
Impaired Beaches: PPH and Venice Beach



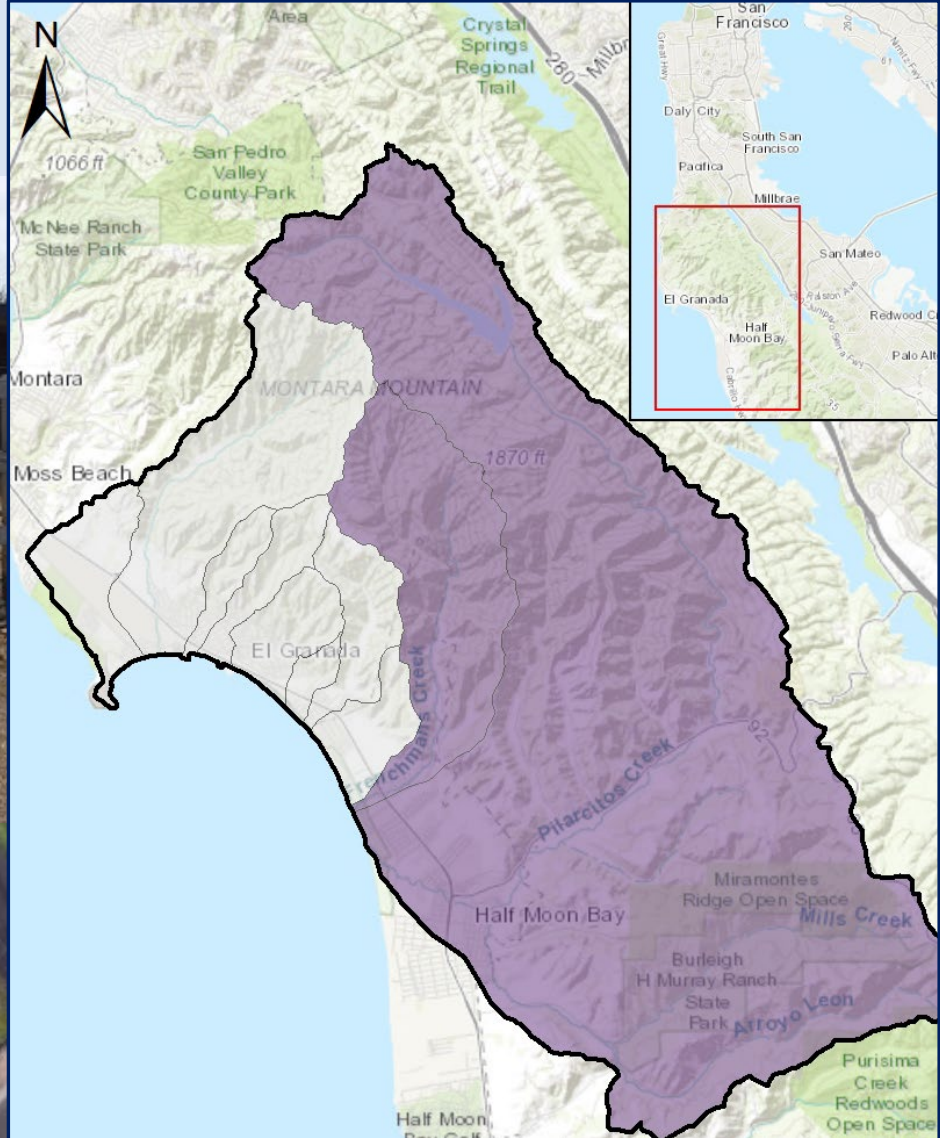
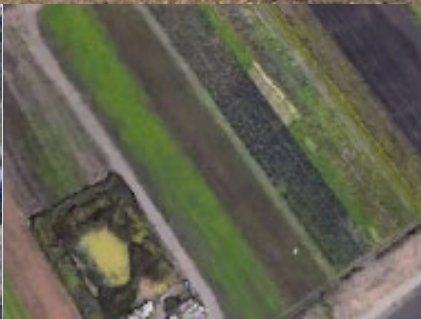
Additional Data and Information

- PPH Circulation Study (2008)
- Source Identification Study (2011-12) 
- RCD Pollution Study (2013-15)
- Pillar Point SSID- Stormwater Permit (2018-19) 
- Surfrider testing of hotspots in PPH 
- First flush monitoring

Sources: PPH



Sources: Venice



Implementation Plan

Source	Actions	Responsible Party
Wastewater plant	Comply with existing permit	City of HMB, El Granada, Montara
Sanitary sewer systems	ID & repair problem areas near	County, residents, businesses
Septic systems	ID & repair faulty systems	County, residents
Harbor/Vessel marinas	ID & repair problems, ensure adequate waste handling capacity	Harbor Authority
Confined animal facilities	Enroll existing permit measures	Horse facility owners/operators
Domestic pets	Public education, install signs and waste bags/bins	City, County, Parks
Stormwater runoff	Stormwater management actions, storm drain cleaning	City and County, other

Monitoring and Re-evaluation

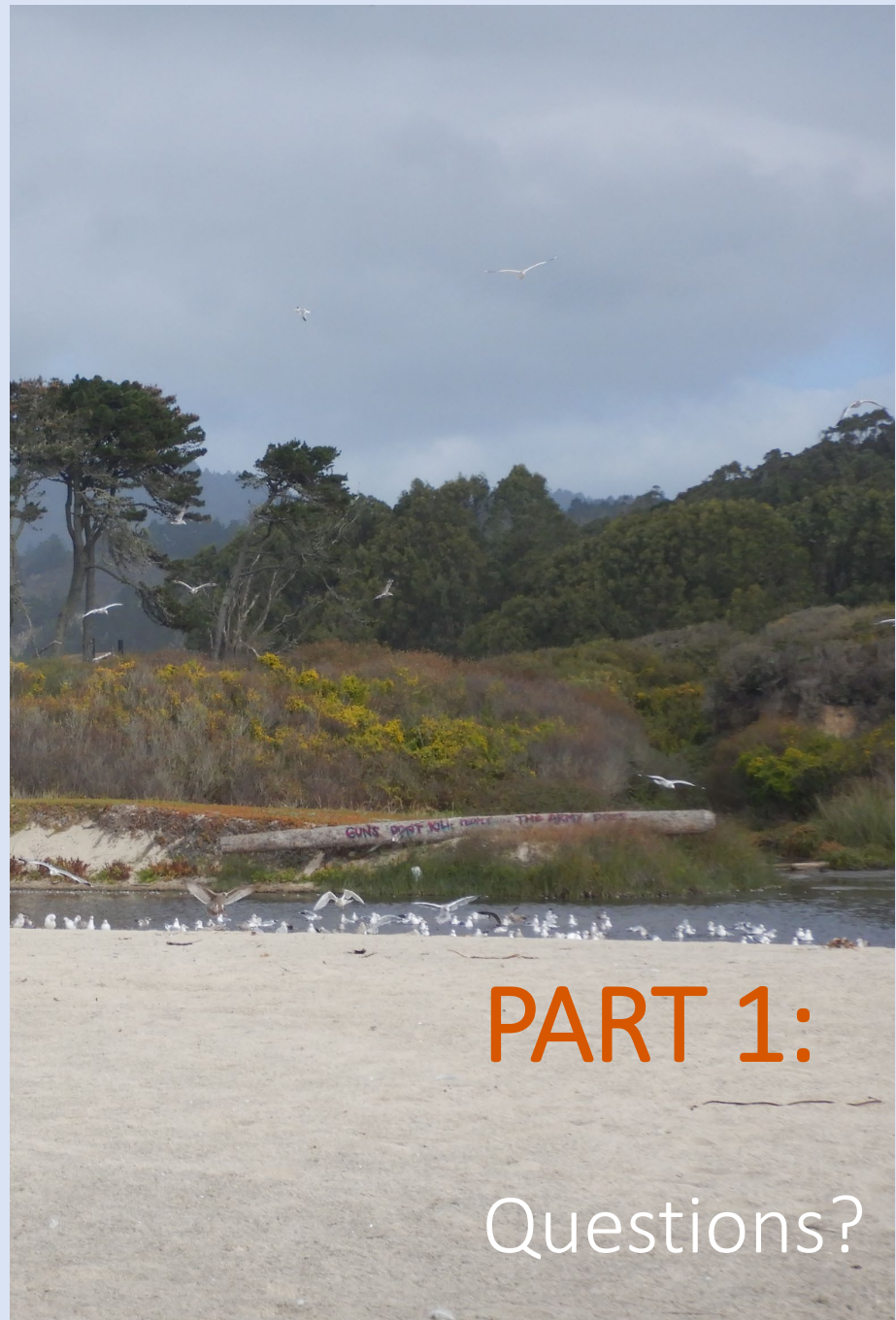
To measure progress and make adjustments:

Water Quality Monitoring

- Where are the specific sources of bacteria?
- Is water quality improving?
- Are implementation actions effective?

Compliance Reporting and Evaluation

- Are implementation actions implemented?



PART 1:

Questions?

PART 2:

CEQA Scoping Meeting
December 4, 2019

Purpose of this Meeting

- Hear your comments on the scope of environmental analysis
- Do you foresee any significant adverse environmental impacts from this TMDL?
- Your comments are important
 - Provide comments on environmental analysis verbally at today's meeting
 - Or in writing by **January 6, 2020**
 - Send comments to: bbaginska@waterboards.ca.gov

Environmental Review Process

- The “project” is:
 - Amendment of our Basin Plan to incorporate TMDL & its Implementation Plan
 - This process is called “Basin Plan Amendment”
- Water Board’s Basin Planning Process is a “Certified Regulatory Program”:
 - Exempt from EIR, Neg. Dec., or Initial Study
 - Instead we prepare Environmental Checklist

CEQA Requirements

- Identify potential adverse environmental impacts that could result from actions taken in response to TMDL
- Discuss alternatives to the “project”
- Identify mitigation measures to reduce severity of potential impacts
- Provide full public disclosure of documents and decision-making process

Effects to Consider Under CEQA

Will Consider:

- Direct and indirect physical changes in the environment
- Such as impacts from:
 - excavation & grading
 - minor construction
 - waste handling & disposal
- Short-term and long-term impacts

Will NOT consider:

- Speculative changes
- Changes that would occur regardless of the TMDL
- Changes with effects already considered

Environmental Checklist Topics

- Aesthetics
- Agricultural resources
- Air quality
- Biological resources
- Cultural resources
- Geology/soils
- Greenhouse gas emissions
- Hazards & hazardous materials
- Water quality & hydrology
- Land use/planning
- Mineral resources
- Noise
- Population/housing
- Public services
- Recreation
- Transportation/traffic
- Tribal cultural resources
- Utilities/service delivery systems

TMDL's Environmental Impacts

Sources	Implementation Actions	Likely Environmental Effects
Sanitary sewer; septic systems	ID, evaluate, maintain, repair existing infrastructures	Minor grading and excavation in existing roadways or already disturbed areas
Sanitary sewer	Control tree roots	Possible removal of mature trees
Pillar Point Harbor and marina	Upgrade the boat ramp restroom	Minor construction
Horse boarding	Measures to divert clean runoff from manure areas and to manage manure	Minor grading and construction to divert stormwater, install gutters and berms
Stormwater Runoff	Measures to manage pet waste	Installing small waste bins and signage
Stormwater Runoff	Construct facilities to detain, infiltrate and treat stormwater	Grading, earthmoving, and possible revegetation to construct facilities

Examples of Possible Mitigation

- Sewer line repairs or maintenance of stormwater facilities could cause construction-related noise
 - Limit construction in time and intensity to meet local noise ordinance requirements



Project Schedule

We are here



- CEQA Scoping Meeting
- CEQA Comments due **Jan 6, 2020**
- Draft TMDL Report, Environmental Checklist – **Spring 2020**
- Public Review and Comments – **Summer 2020**
- Water Board Hearing – **late 2020**



PART 2:

Questions?